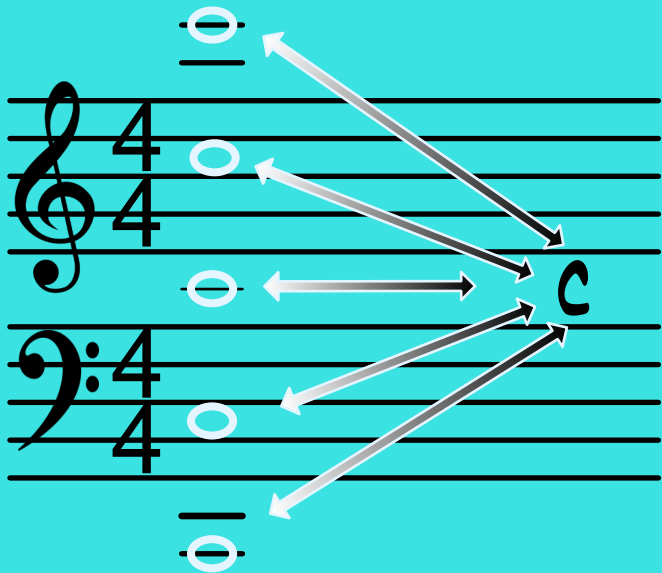


# READING NOTES INFOGRAPHIC

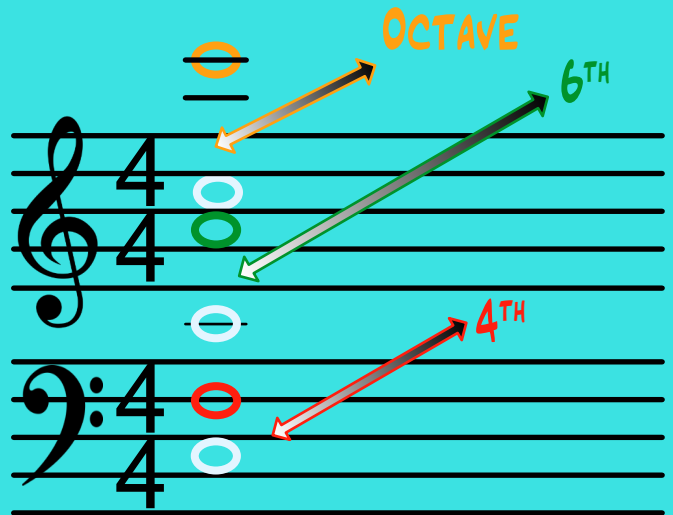
# PLAY PIANO NOW

## THE GRAND STAFF



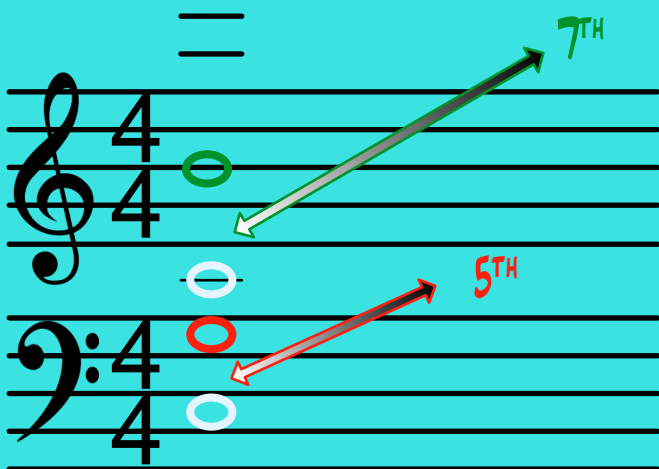
The Bass Clef is a vertically flipped mirror image of the Treble Clef around middle C

## THE EVEN INTERVALS



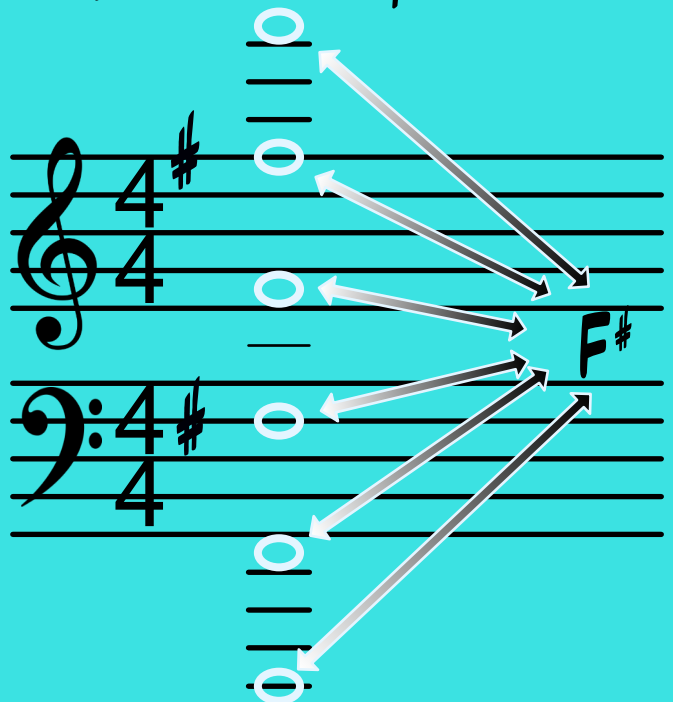
2<sup>ND</sup>, 4<sup>TH</sup>, 6<sup>TH</sup> & OCTAVES  
are always line to space  
or space to line

## THE ODD INTERVALS



3<sup>RD</sup>, 5<sup>TH</sup>, 7<sup>TH</sup>  
are always space to space  
or line to line

## THE KEY SIGNATURE



Any # or b note in the key signature is global. In G Major any F is sharpened not just the ones indicated in the key signature.